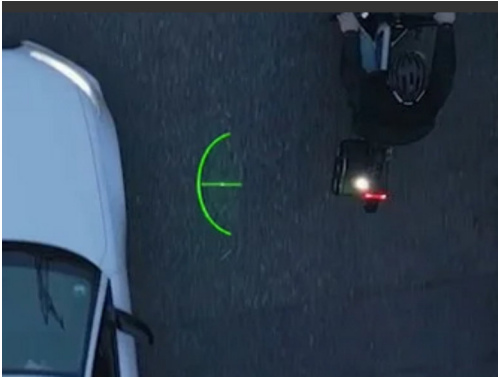




# protects cyclists lives

With SIDEWATCH, cyclists are visible from afar and significantly reduce their risk of accidents



Car drivers realize the safety distance

Lights flash if the safety distance is not maintained



Commuters become visible from afar

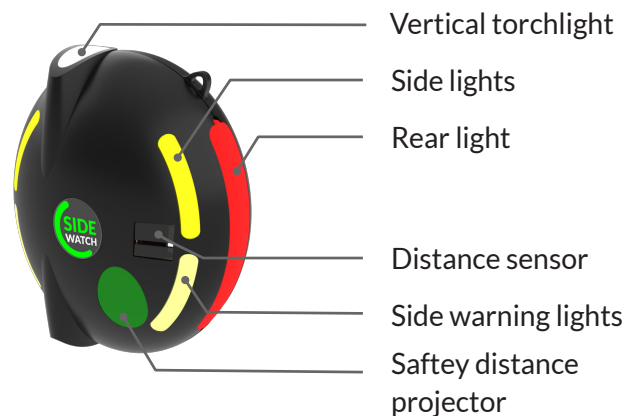
Rear light shows the width of trailers



The first warning light that effectively helps cyclists avoid side collisions

## SIDEWATCH features

- Ultra bright side lights make cyclists visible during day and night
- Side warning lights indicate cars that they are below safety distance
- Additional rear light indicates real width of bicycles with trailers
- Vertical torchlight illuminates cyclists when a car comes too close
- Distance projector shows safety distance during dawn and night
- Distance sensor controls warning functions and warning app



[Link to SIDEWATCH video](#)

**„Accidents between motor vehicles and cyclists mainly occurred when turning or crossing (54%) and when motor vehicles were turning (40%).“**

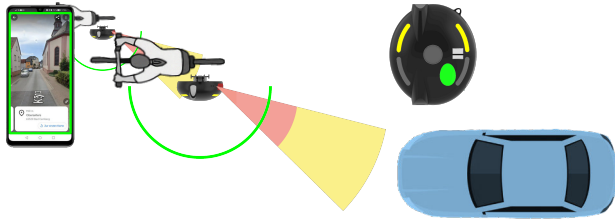
Source: Accident research compact, Urban accidents involving pedestrians and cyclists Gesamtverband der Deutschen Versicherungswirtschaft e. V., Unfallforschung der Versicherer 10/2013



# protects cyclists lives

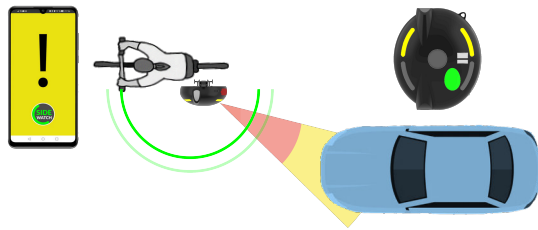
## SIDEWATCH functions

No object visible within a distance of 4 meters:



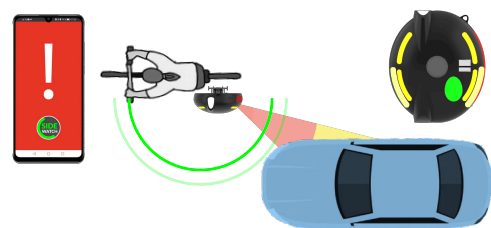
- Upper yellow LEDs are permanently switched on
- Distance projector flashes with low frequency

Object recognized within a distance of 3.5 meters:



- Upper yellow LEDs are permanently switched on
- Distance projector flashes with high frequency
- SIDEWATCH app warns with yellow screen

Object recognized within a distance of 1.5 meters:



- Upper yellow LEDs are permanently switched on
- Warning LEDs are flashing
- Vertical torchlight illuminates biker
- Distance projector flashes with high frequency
- SIDEWATCH app warns with red screen

## SIDEWATCH attachments



Saddle mount



Backback strap clip



Tube attachment



Belt clip

## Technical data

- Operating time up to 8 hours depending on operation mode
- Chargeable with standard USB-C cable
- Distance projector complies with laser safety class 2M (optical output not more than 1mW)
- ToF sensor operating distance between 0.5m and 4m
- Flashing of warning LEDs and distance projector selectable between 0 Hz (no flashing) and 1 Hz
- Complies with applicable CE standards

[Link to SIDEWATCH video](#)

Developed by Digonomics GmbH & Co. KG, Germany/Spain, [t.klotz@digonomics.com](mailto:t.klotz@digonomics.com).

Distributed by Sales-Advice, Michael Munz, [m.munz@sales-advise.de](mailto:m.munz@sales-advise.de)

[www.sidewatch.life](http://www.sidewatch.life)