



# E-Scooter Accidents & Injuries

European Road Safety Charter 2019

Catherine Lerer, Esq.

McGee, Lerer and Associates

# The Backstory



How are Scooter Accidents Happening?





# Why are Scooter Accidents Happening

# Scooter Malfunctions



# Brakes fail

## Cable brake

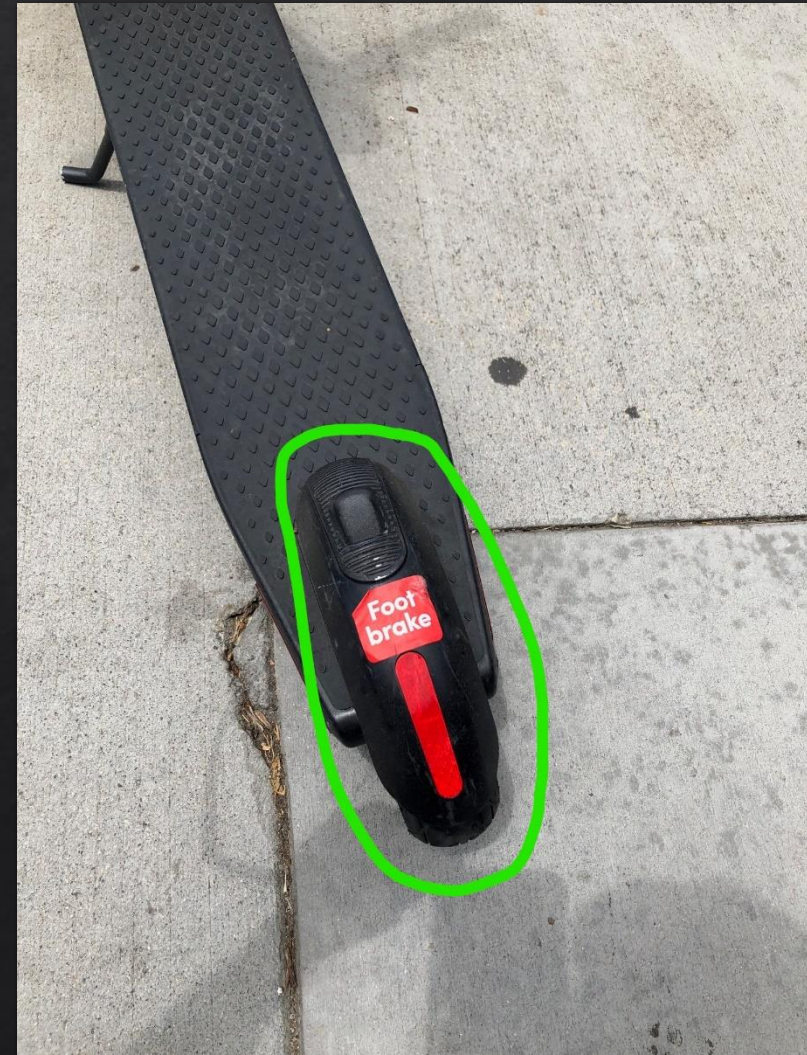


## Electric brake





# Scooters with e-brakes have rear foot (friction) brakes





# Throttle sticks





Handlebar detaches



Handlebar post detaches



Baseboard breaks



Front wheel breaks off





# Other Malfunctions/Defects

- ◆ Loose handlebars
- ◆ Front wheel rotates 90 degrees
- ◆ Shuts down mid-ride

# Vandals cut brake lines



Florida man arrested after cutting hundreds of electric scooter brake lines

Micah Toll - Oct. 2nd 2019 1:46 pm ET [@MicahToll](#)





# Malicious Hacking



Geo-speed limiting = virtual fencing

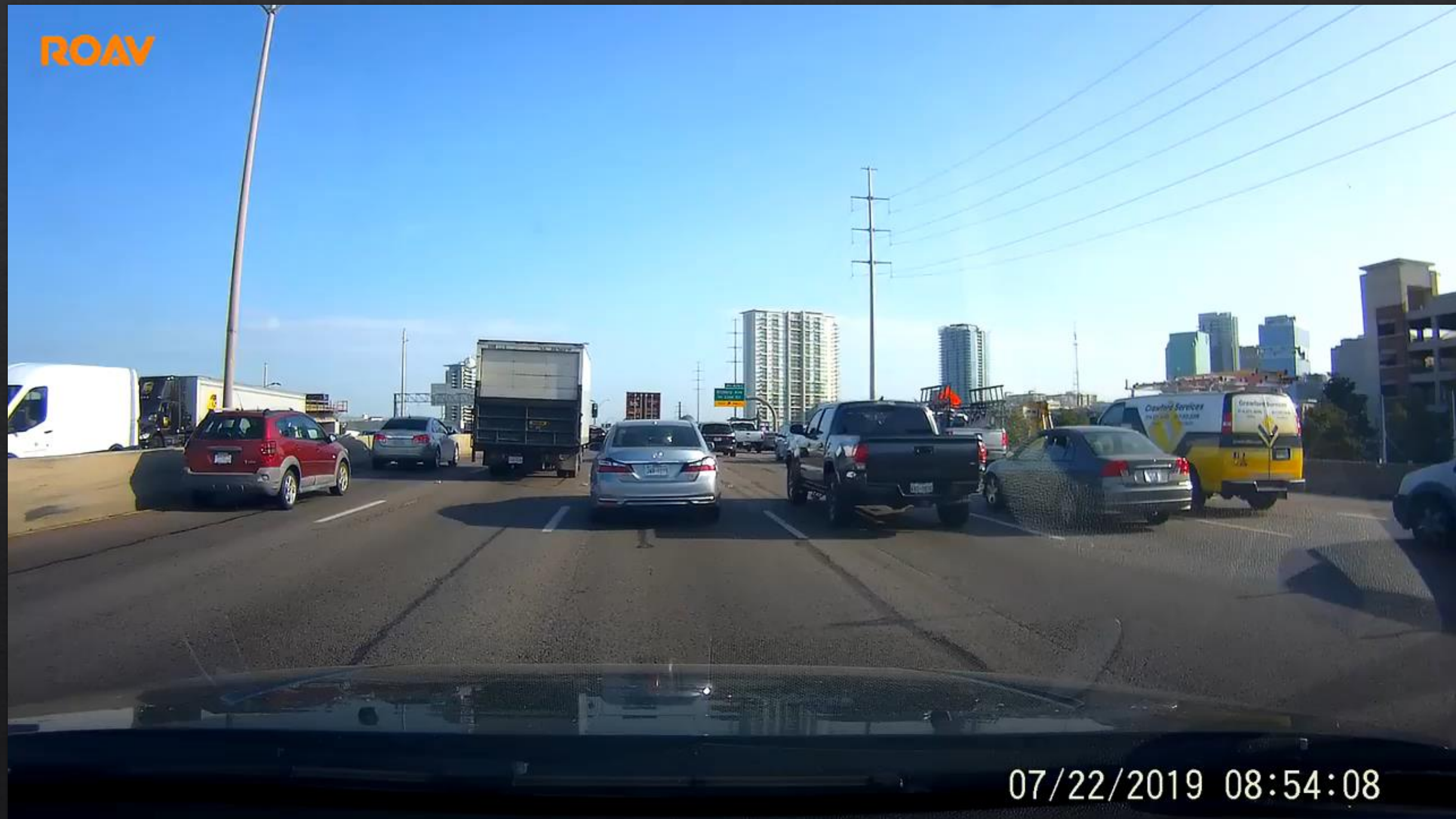


# Riders Don't Know the Rules or Don't Care





ROAV

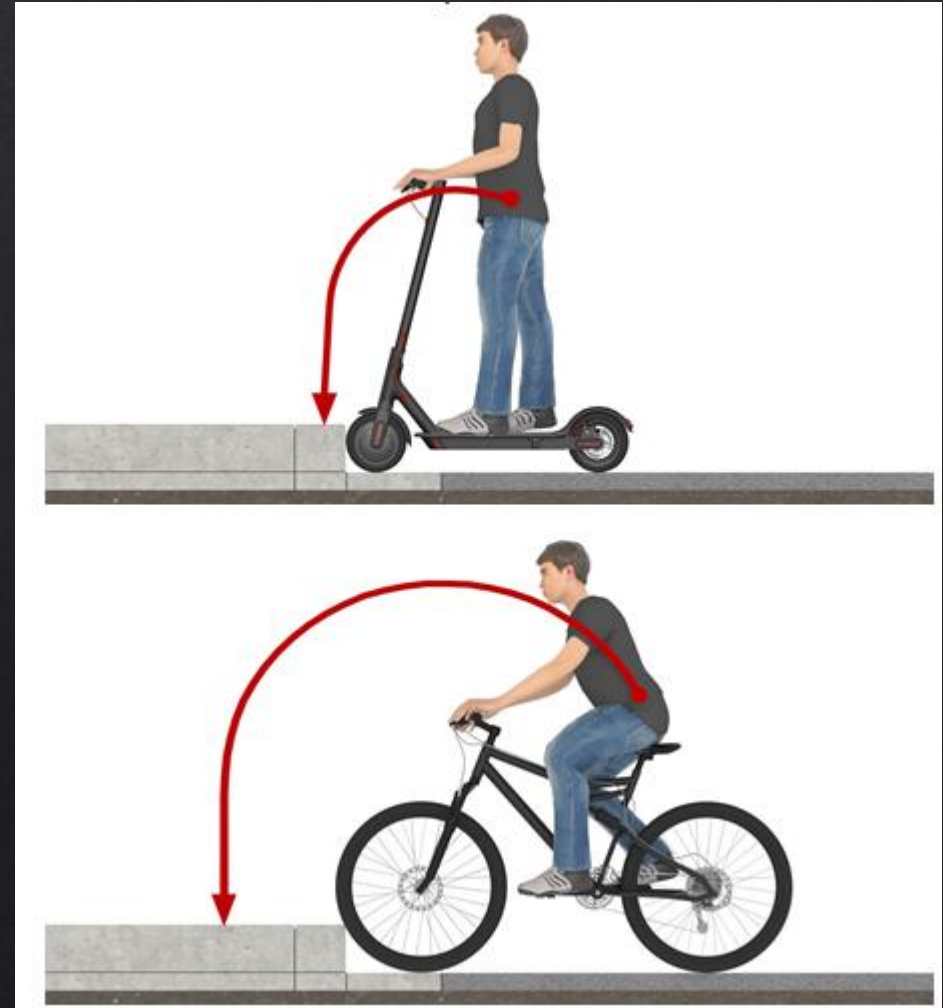


07/22/2019 08:54:08



# What makes E-Scooters so Dangerous?

- ◆ Maneuverability
- ◆ Center of gravity
- ◆ Wheels



# Why Scooters Wheels are Dangerous

Small size + composition





# Manufacturer's User Manual



Difficulty navigating over roadway irregularities























# Manufacturer's User Manual



**DO NOT** take your hands off the handlebar while riding. Do not ride with one hand only.





bird\_fails

InShot

# Alternative Design

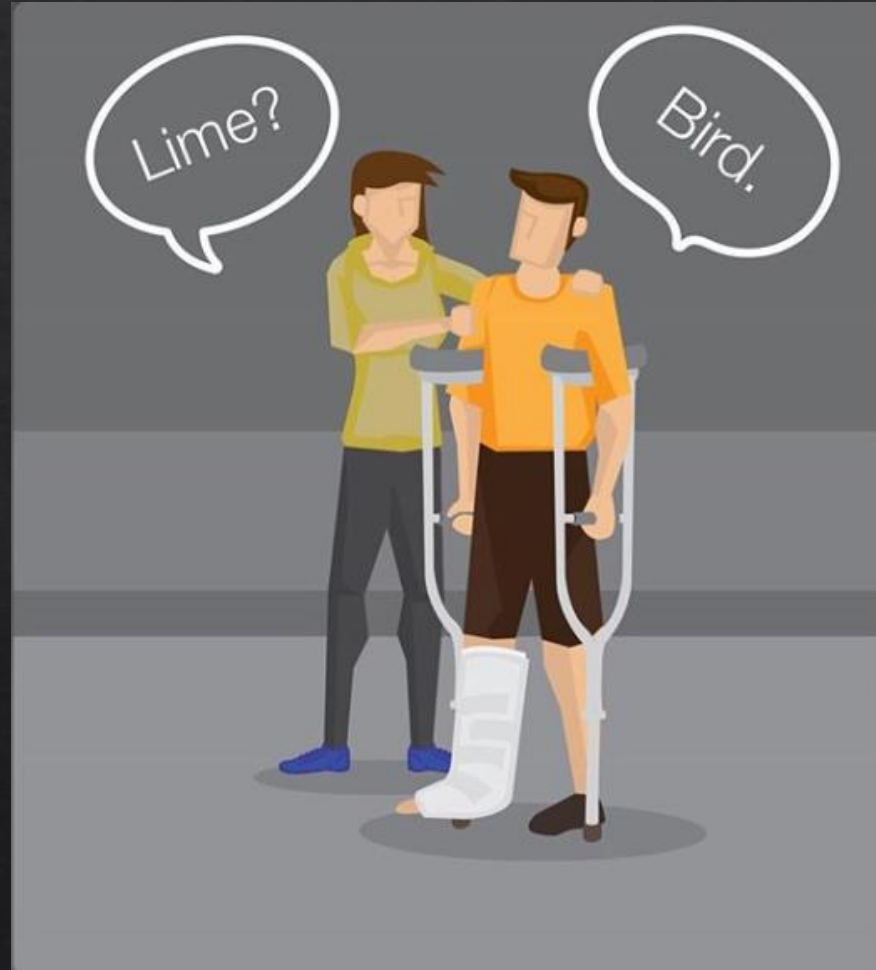




# The Tourist Problem



# Scooter Accident Injuries





# E-Scooter Injuries

Brain/Head/Face



Upper Extremities



Lower Extremities







# SCOOTER INJURY STUDIES

JAMA Study | CDC Study



**E-SCOOTERS vs. BIKES:**  
more e-scooter injuries



**HEAD INJURIES:** 40 - 44%



**FRACTURES:** 30%



**HELMETS:** Only 4%



**AGE:** 10.8% under 18



Catherine Lerer, Esq.  
McGee, Lerer and Associates

+1 (310) 231-9717

[www.mcgeelerer.com](http://www.mcgeelerer.com)

[clerer@mcgeelerer.com](mailto:clerer@mcgeelerer.com)

 [fb.com/mcgeelerer](https://fb.com/mcgeelerer)

 [@mcgeelerer](https://@mcgeelerer)