



SAFER AND HEALTHIER TO SCHOOL

THE SLOVENIAN APPROACH

U. Brumec / L. Herga

hypothesis & confirmation

Does the colourful road design, around Schools, has any effect on drivers to reduce the speed?

YES

Proper road design have a positive effect on drivers around schools, and they do tend to reduce speed. What is also very important is the fact, that extreme driving (max. speeds) are almost gone.

Do drivers in the area of colourful road design pay more attention to what is happening on or alongside the road?

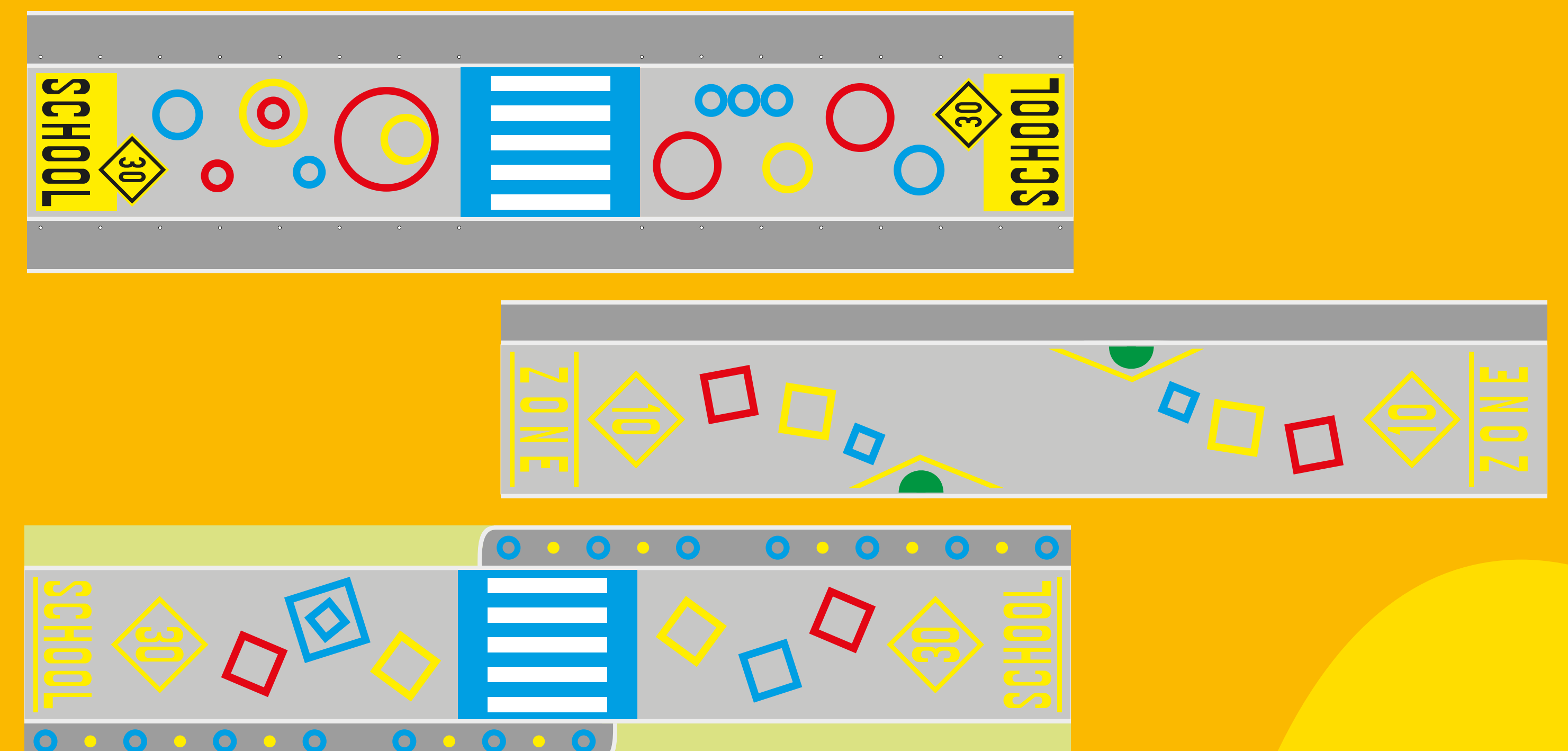
YES

They do tend to drive more alert, as the road design tend to “wake them up” from monotone driving (so called driving in partly automated mode – not knowing when you came home).

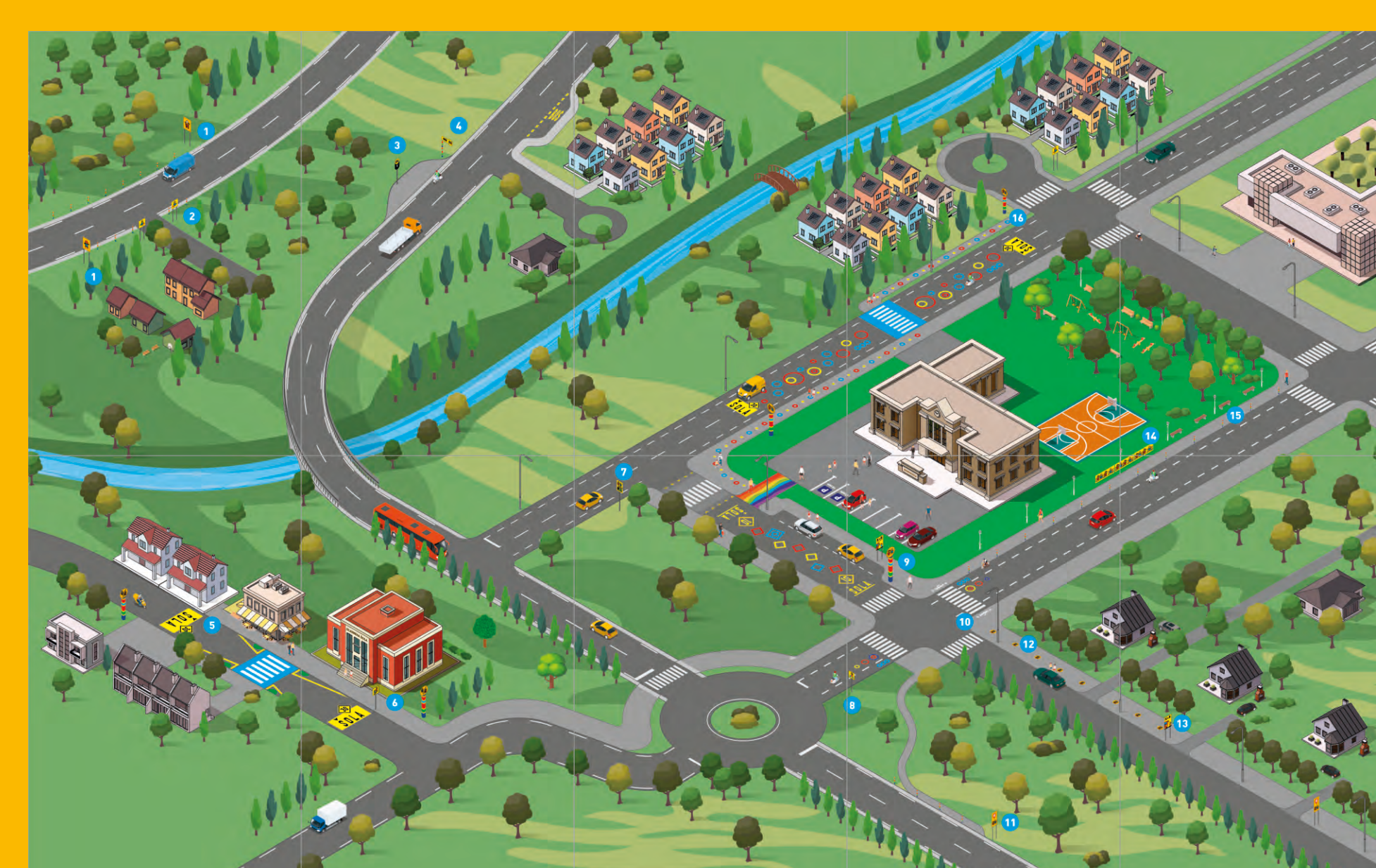
urban equipment



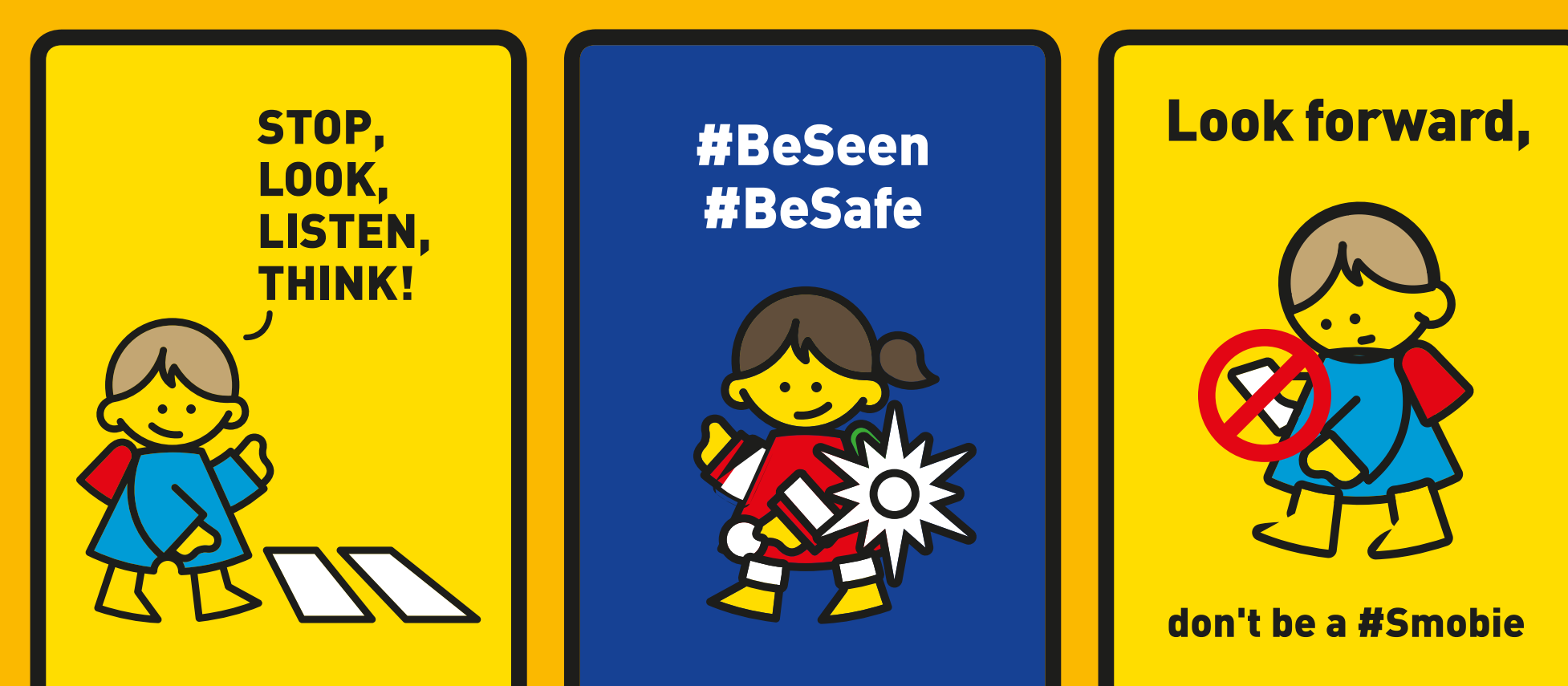
architectural design



inter-activ digital map



preventive messages



School

