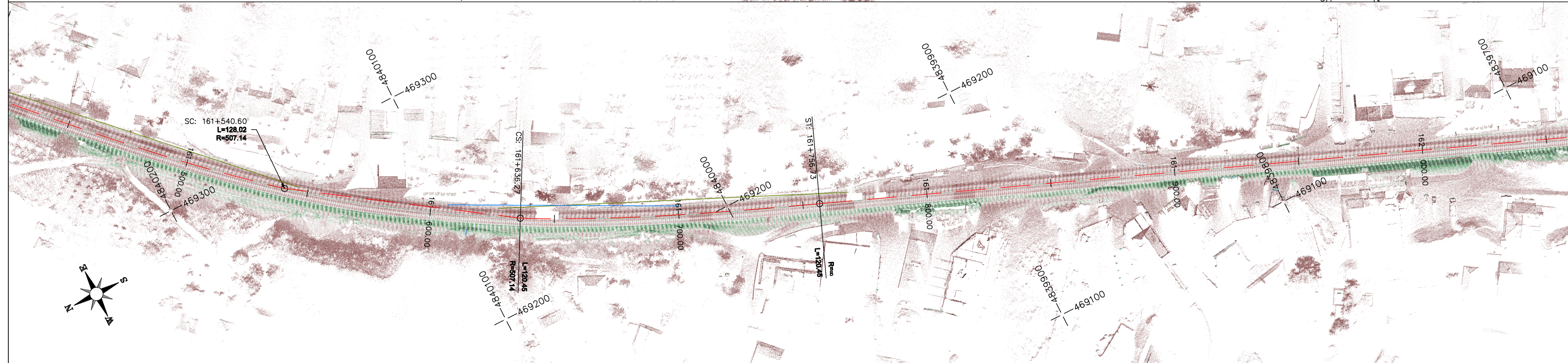
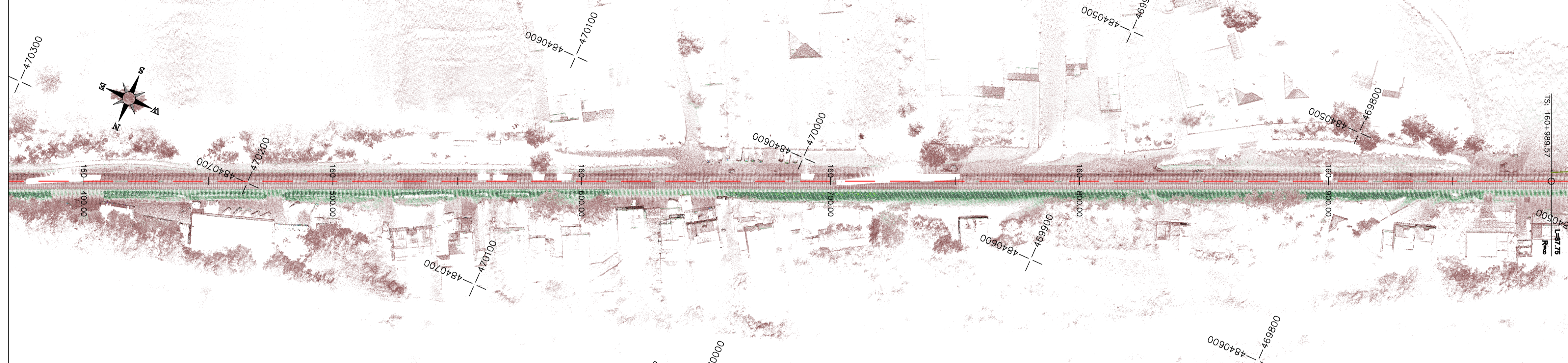
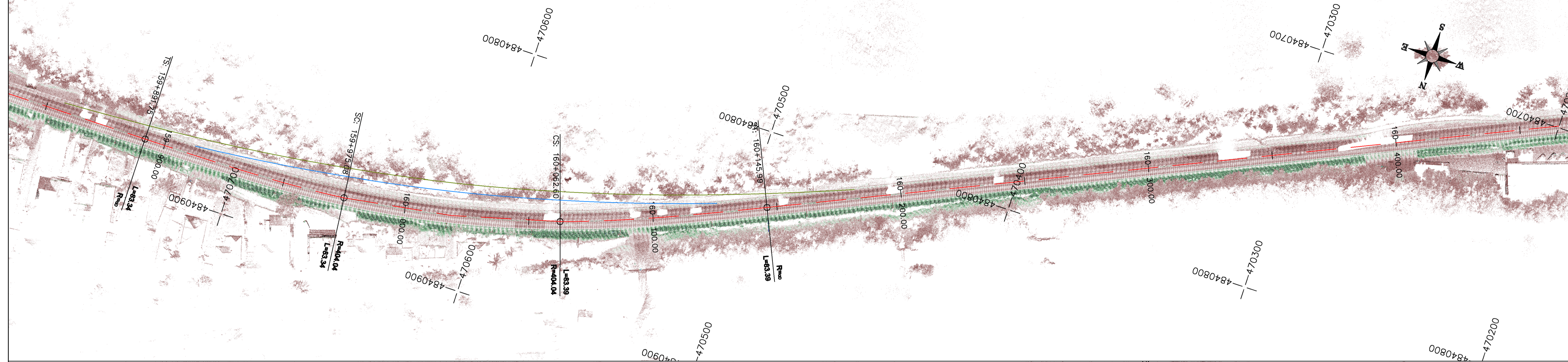


LEGEND - SIGHT DISTANCE ENVELOPES

- required sight distance - direction Krajevo - Ušće
- required sight distance - direction Ušće - Krajevo
- overtaking sight distance - direction Krajevo - Ušće
- overtaking sight distance - direction Ušće - Krajevo

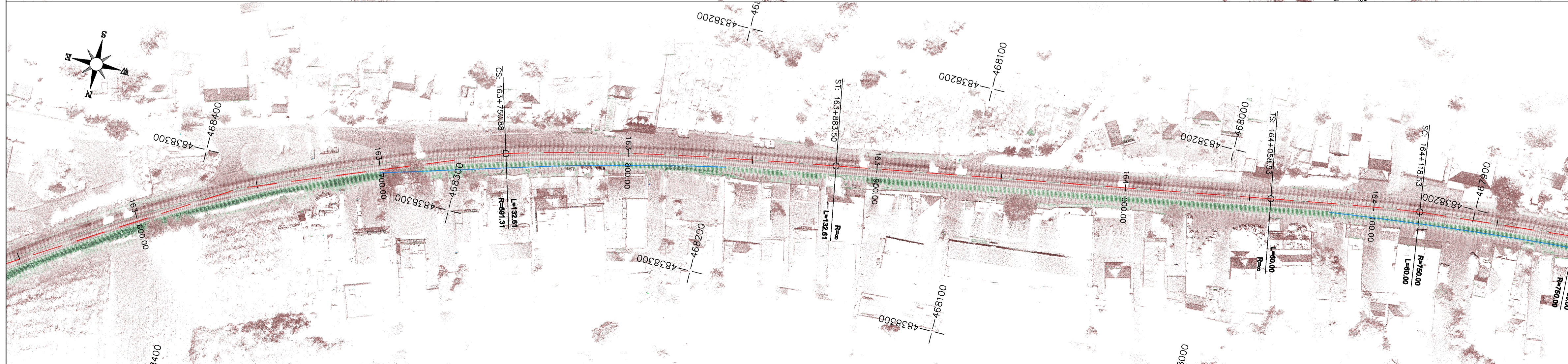
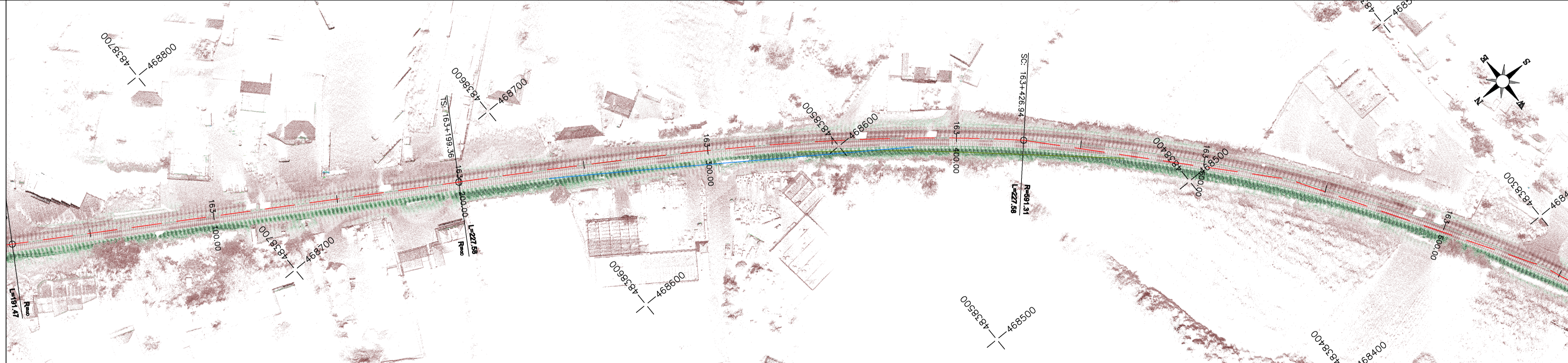
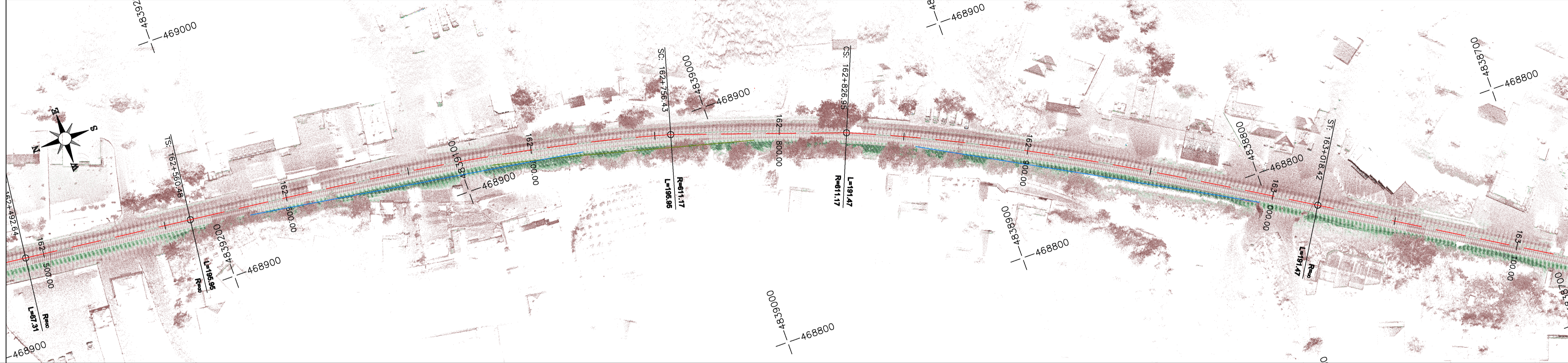
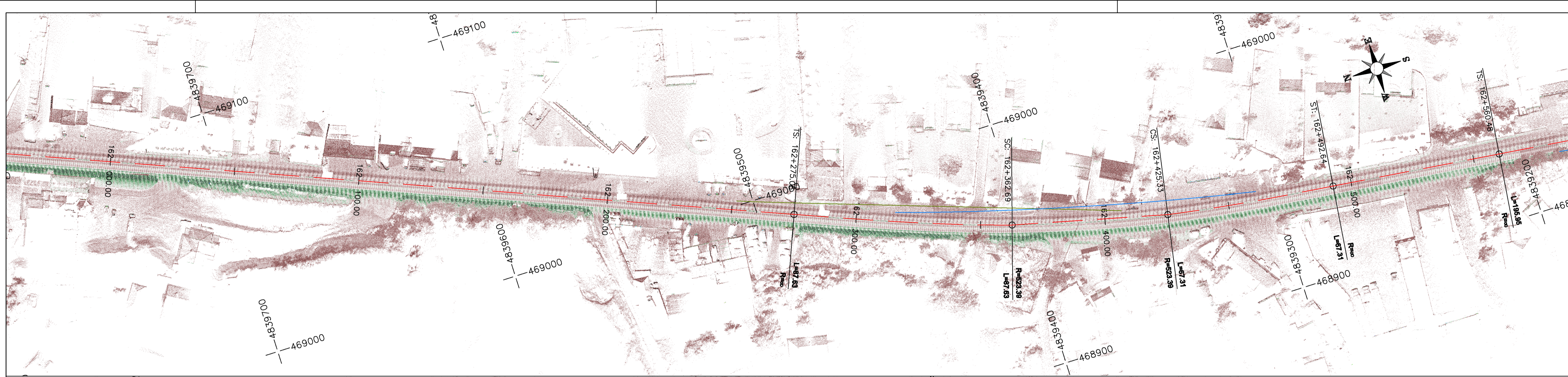
INVESTOR: PE "Roads of Serbia" Bulevar Jadranske Alaske 282, Beograd		PROJECT: Elaborate of analysis of available sight distances with proposal of measures for removal of deficiencies on part of the State road III number 22, from node 2223 to node 2226, Krajjevo/Ušće/13.5km	
CUSTOMER: Vojvodina a.d. Jovana Djordjevića 2 Novi Sad		DESIGNER: "Panpro Team" d.o.o.	
TYPE OF TECHNICAL DOCUMENTATION: ELABORATE		Mark: Team leader: Miel Sabo, dipl.civil eng.	Team member: Marina Komad, dipl.civil eng.
VOLUME TITLE: Elaborate of analysis of available sight distance with proposal of measures of removal of deficiencies		Book: E1	Team member: Duško Sokić, master of traffic eng.
DRAWING TITLE: Layout plan with envelopes of sight distances		Date No.: 2.1	Revision number: REV 0
Scale: 1:1000	Date: Jun 2023	No. of sheets: 97	Revision number: REV 0



LEGEND - SIGHT DISTANCE ENVELOPES

- required sight distance - direction Krajevo - Ušće
- required sight distance - direction Ušće - Krajevo
- overtaking sight distance - direction Krajevo - Ušće
- overtaking sight distance - direction Ušće - Krajevo

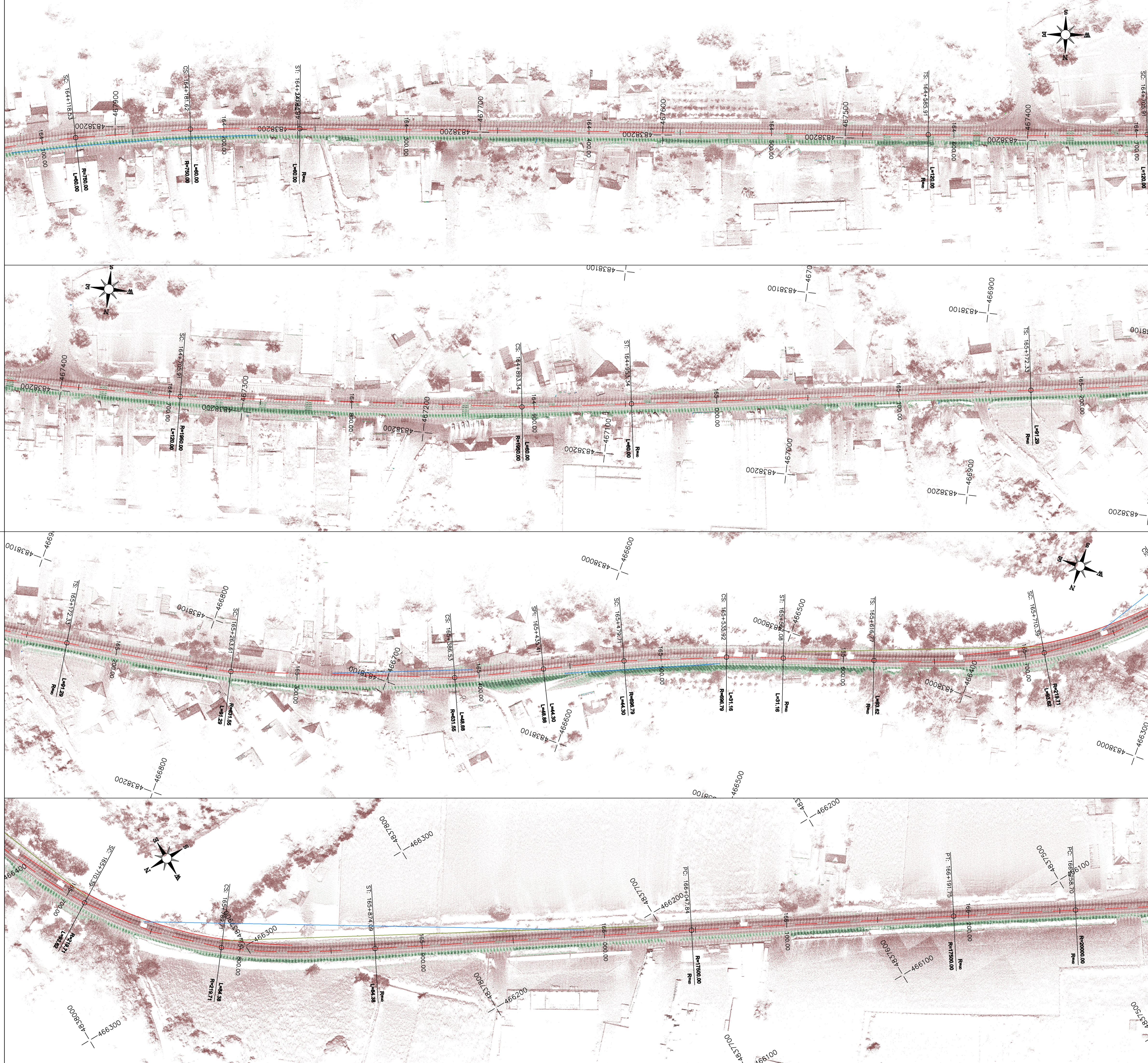
INVESTOR: PE "Roads of Serbia" Belovar kraj Alaksandra 282, Belgrade		PROJECT: Elaborate of analysis of available sight distances with proposal of measures for removal of deficiencies on part of the State road IB number 22, from mile 223 to mile 225, Krajevo/Beograd 3.5 km	
CUSTOMER: Vojvodina a.d. Jovana Djordjevića 2 Novi Sad		DESIGNER: "Panpro Team" d.o.o.	
TYPE OF TECHNICAL DOCUMENTATION: ELABORATE		Mark: Team leader: Miel Sabo, dipl.civil eng.	Team leader: Miel Sabo, dipl.civil eng.
VOLUME TITLE: Elaborate of analysis of available sight distance with proposal of measures of removal of deficiencies		Rank: E1 Team member: Dušica Sokić, master of traffic eng.	Rank: E1 Team member: Dušica Sokić, master of traffic eng.
DRAWING TITLE: Layout plan with envelopes of sight distances		Date No.: 2.2	Date No.: 2.2
Scale: 1:1000	Date: Jun 2023	No. of sheets: 97	Revision number: REV 0



LEGEND - SIGHT DISTANCE ENVELOPES

- required sight distance - direction Krajevo - Ušće
- required sight distance - direction Ušće - Krajevo
- overtaking sight distance - direction Krajevo - Ušće
- overtaking sight distance - direction Ušće - Krajevo

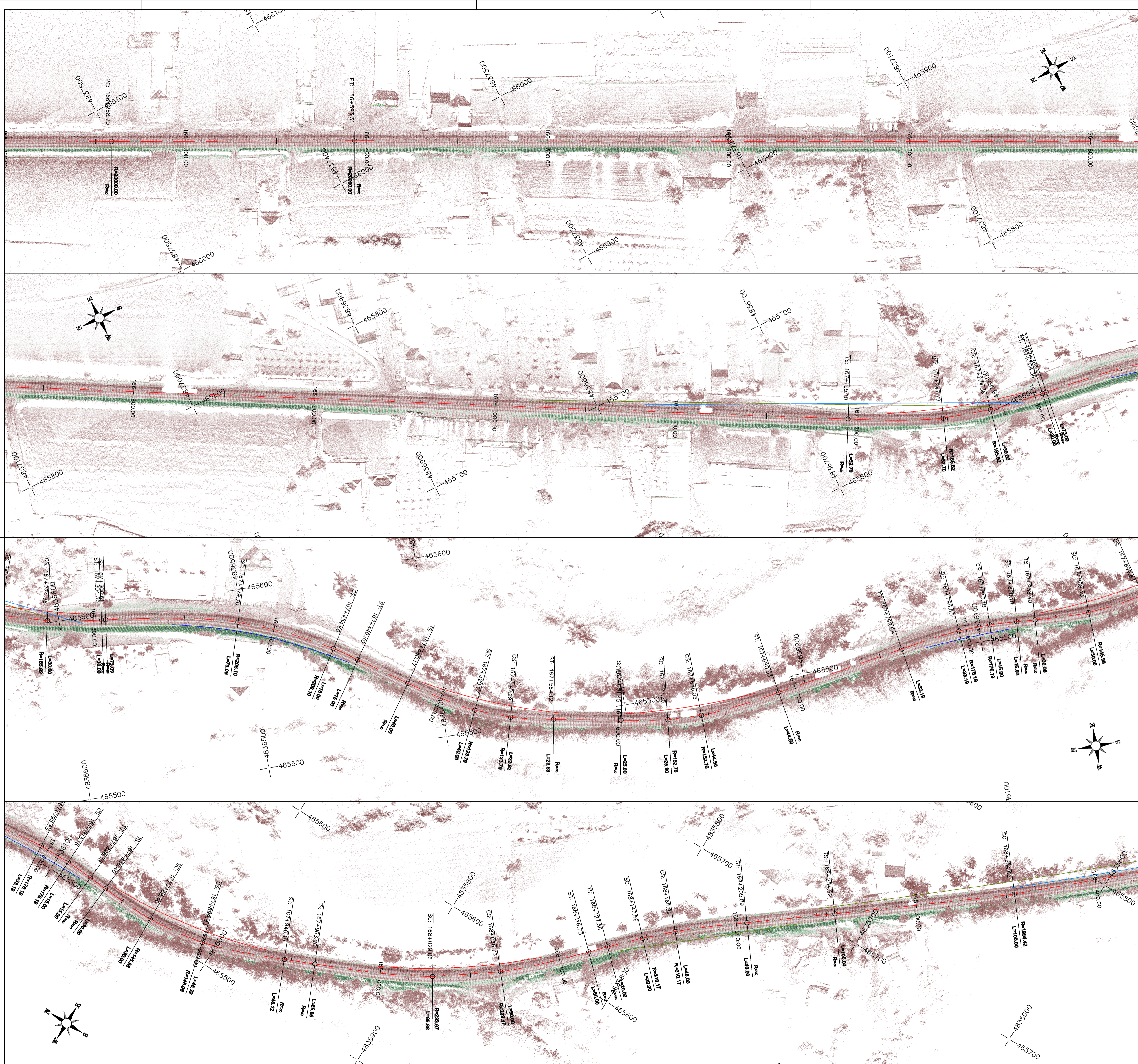
INVESTOR: PE "Roads of Serbia" Bulevar kralja Aleksandra 282, Beograd		PROJECT: Elaborate of analysis of available sight distances with proposal of measures for removal of deficiencies on part of the State road II number 22, from mile 223 to mile 225, Krajevo/Beograd-Usce	
CUSTOMER: Vojvodina a.d. Jovana Djordjevića 2 Novi Sad		DESIGNER: "Panpro Team" d.o.o.	
TYPE OF TECHNICAL DOCUMENTATION: ELABORATE		Mark: Team leader: Mislav Sabo, dipl.civil eng.	Team member: Marina Komad, dipl.civil eng.
VOLUME TITLE: Elaborate of analysis of available sight distance with proposal of measures of removal of deficiencies		Rank: E1	Team member: Đorđe Sokić, master of traffic eng.
DRAWING TITLE: Layout plan with envelopes of sight distances		Date No.: 2.3	Revision number: REV 0
Scale: 1:1000	Date: Jun 2023	No. of sheets: 97	Revision number: REV 0



LEGEND - SIGHT DISTANCE ENVELOPES

- required sight distance - direction Krajevo - Ušće
- required sight distance - direction Ušće - Krajevo
- overtaking sight distance - direction Krajevo - Ušće
- overtaking sight distance - direction Ušće - Krajevo

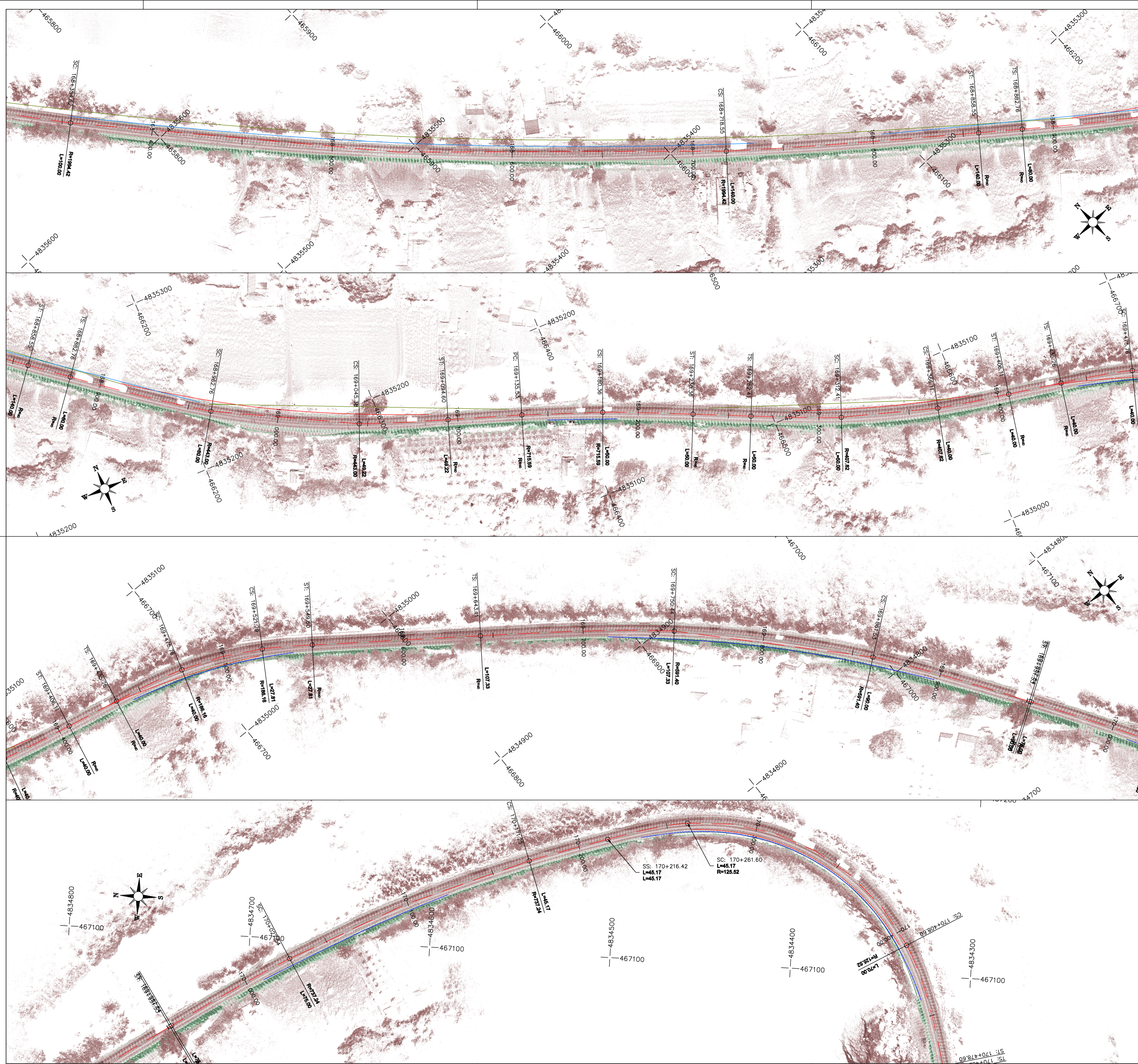
INVESTOR: PE "Roads of Serbia" Bulevar Jadrin Alkamina 282, Belgrade		PROJECT: Elaborate of analysis of available sight distances with proposal of measures for removal of deficiencies on part of the State road BB number 22, from mile 223 to mile 225, Krajevo/Ušće/Beograd 13.15 km	
CUSTOMER: Vojvodina a.d. Jovana Djordjevića 2 Novi Sad		DESIGNER: "Panpro Team" d.o.o.	
TYPE OF TECHNICAL DOCUMENTATION: ELABORATE		Mark: Team leader: Miel Sabo, dipl.civil eng.	Team leader: Miel Sabo, dipl.civil eng.
VOLUME TITLE: Elaborate of analysis of available sight distance with proposal of measures of removal of deficiencies		Rank: ET Team member: Dušica Stokić, master of traffic eng.	Rank: ET Team member: Dušica Stokić, master of traffic eng.
DRAWING TITLE: Layout plan with envelopes of sight distances		Date No.: 2.4	Revision number: REV 0
Scale: 1:1000	Date: Jun 2023	No. of technical: 97	Revision number: REV 0



LEGEND - SIGHT DISTANCE ENVELOPES


—	required sight distance - direction Krajevo - Ušće
—	required sight distance - direction Ušće - Krajevo
—	overtaking sight distance - direction Krajevo - Ušće
—	overtaking sight distance - direction Ušće - Krajevo

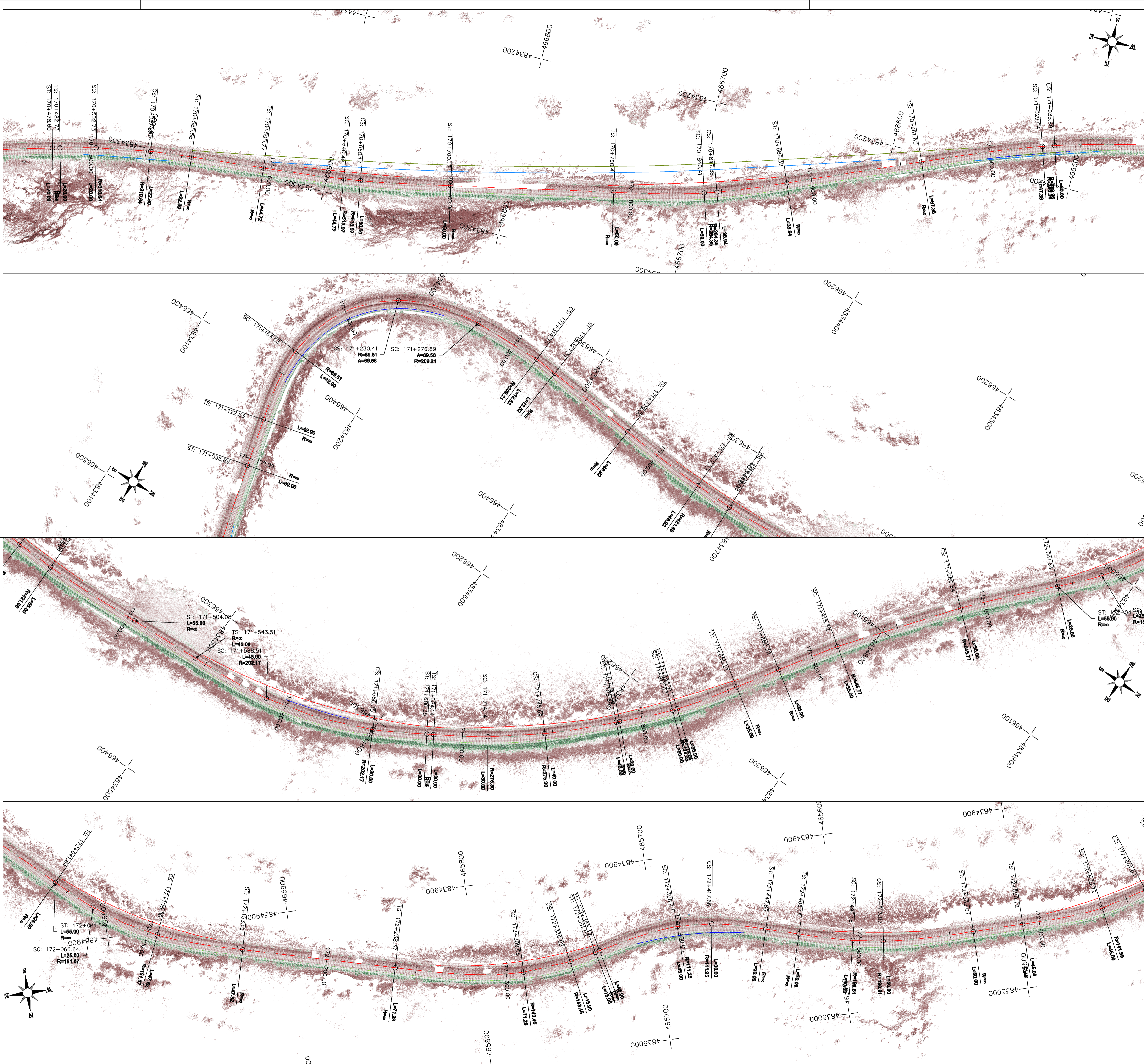
INVESTOR: PE "Roads of Serbia" Bulevar Krajiv Alaksandra 282, Belgrade		PROJECT: Elaborate of analysis of available sight distances with proposal of measures for removal of deficiencies on part of the State road III number 22, from mile: 223 to mile 225, Krajevo/Ušće/13.5 km	
CUSTOMER: Vojvodina a.d. Jovana Djordjevića 2 Novi Sad		DESIGNER: "Panpro Team" d.o.o.	
TYPE OF TECHNICAL DOCUMENTATION: ELABORATE		Mark: Team leader: Miel Sabo, dipl.civil eng.	Team leader: Miel Sabo, dipl.civil eng.
VOLUME TITLE: Elaborate of analysis of available sight distance with proposal of measures of removal of deficiencies		Book: Team member: Marina Komad, dipl.civil eng.	Book: Team member: Duško Sokić, master of traffic eng.
DRAWING TITLE: Layout plan with envelopes of sight distances		Date No.: 2.5	Date No.: 2.5
Scale: 1:1000	Date: Jun 2023	No. of sheets: 97	Revision number: REV 0



LEGEND - SIGHT DISTANCE ENVELOPES

- required sight distance - direction Krajevo - Ušće
- required sight distance - direction Ušće - Krajevo
- overtaking sight distance - direction Krajevo - Ušće
- overtaking sight distance - direction Ušće - Krajevo

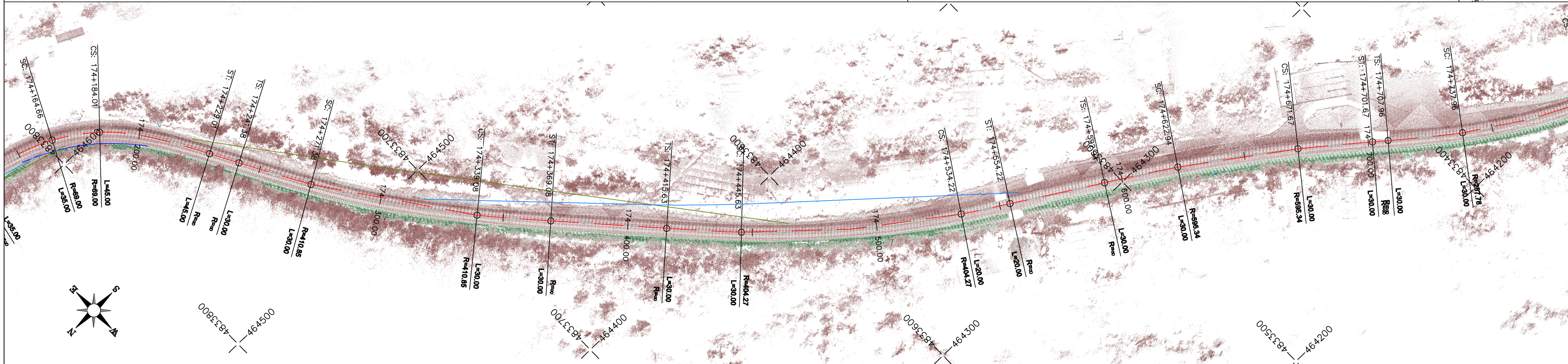
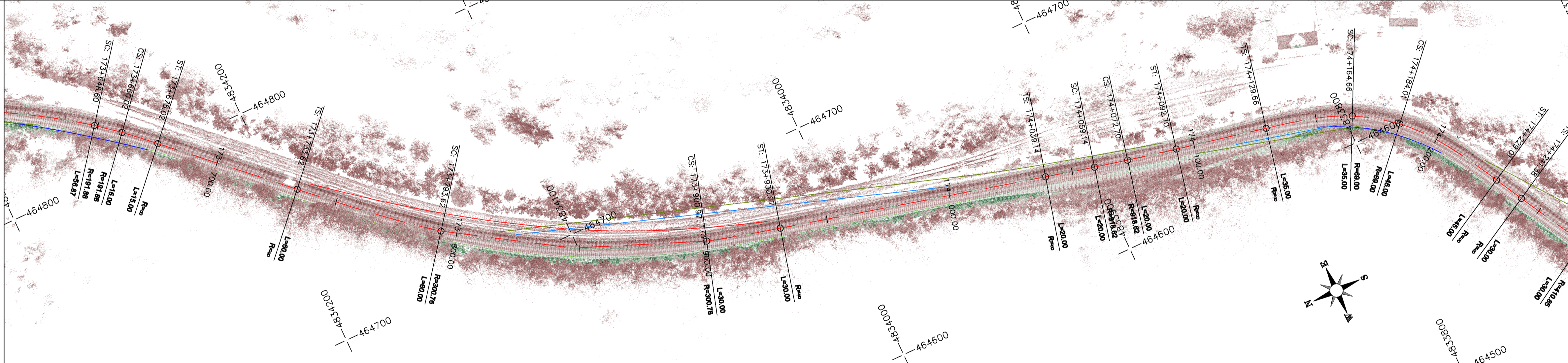
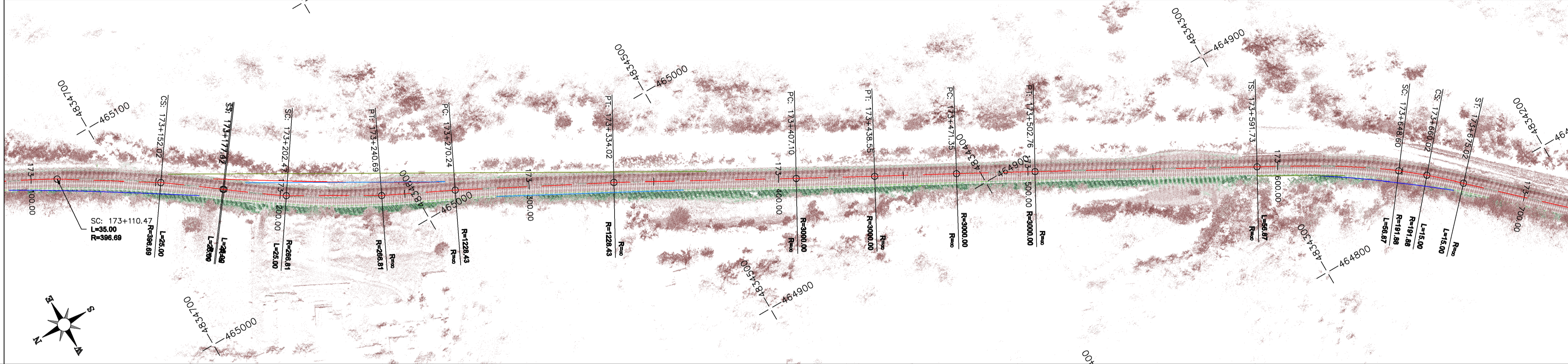
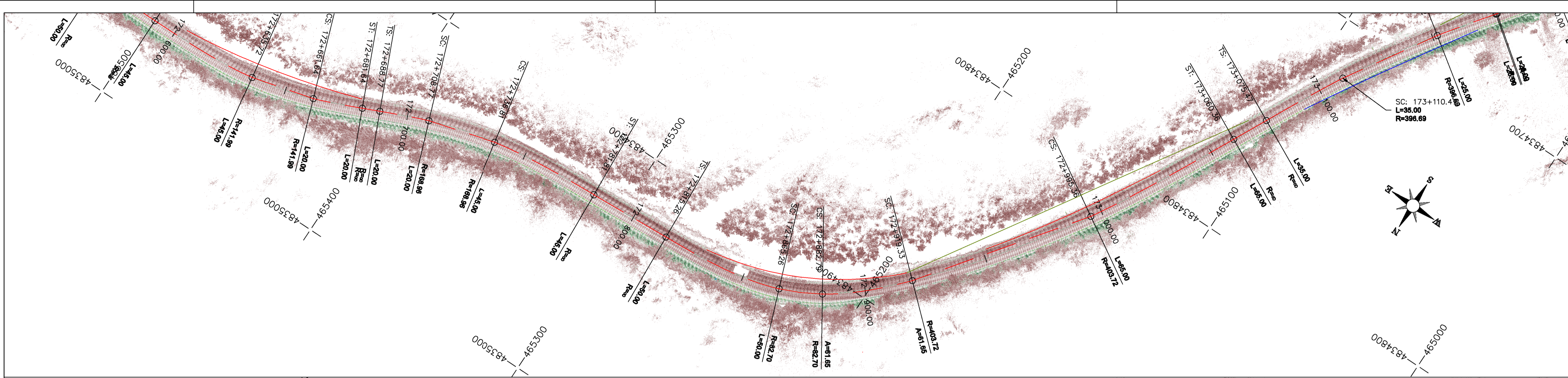
INVESTOR: PI "Roads of Serbia" Bulevar Jadrin Alkanaida 282, Belgrade		PROJECT: Elaborate of analysis of available sight distances with proposal of measures for removal of deficiencies on part of the State road III number 22, from mile: 223 to mile 225, Krajjevo/Ušće/3.5 km
CUSTOMER: Vojvodina p.d Jovana Djordjevića 2 Novi Sad		DESIGNER: "Panpro Team" d.o.o.
TYPE OF TECHNICAL DOCUMENTATION: ELABORATE	Mark: Team leader: Miel Sabo, dipl.civil eng.	Team leader: Miel Sabo, dipl.civil eng.
VOLUME TITLE: Elaborate of analysis of available sight distance with proposal of measures of removal of deficiencies	Book: E1 Team member: Marina Komad, dipl.civil eng.	Book: M1 Team member: Dorđe Stokić, master of traffic eng.
DRAWING TITLE: Layout plan with envelopes of sight distances	Date No: 2.1	
Scale: 1:1000	Date: Jun 2023	No. of sheets: 97
		Revision number: REV 0



LEGEND - SIGHT DISTANCE ENVELOPES

- required sight distance - direction Krajevo - Ušće
- required sight distance - direction Ušće - Krajevo
- overtaking sight distance - direction Krajevo - Ušće
- overtaking sight distance - direction Ušće - Krajevo

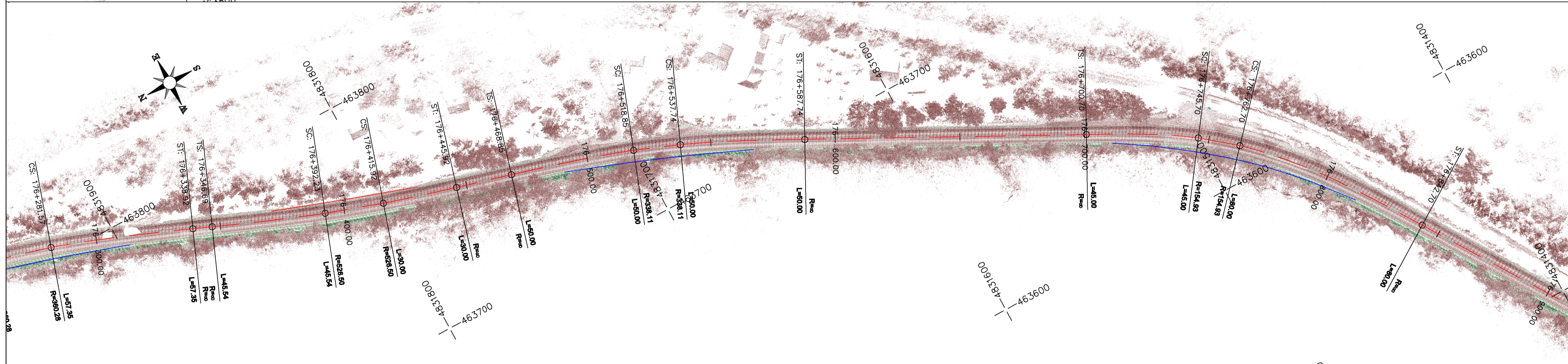
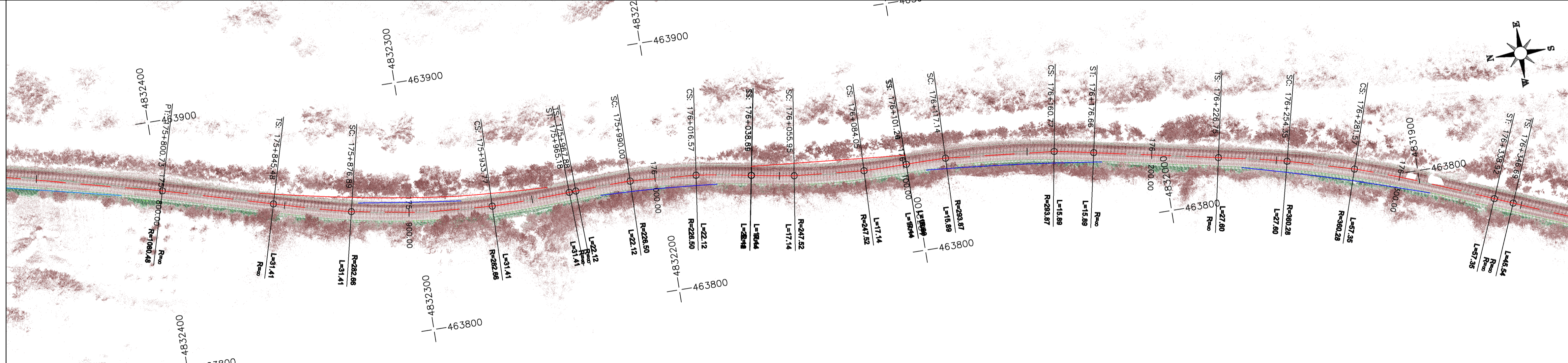
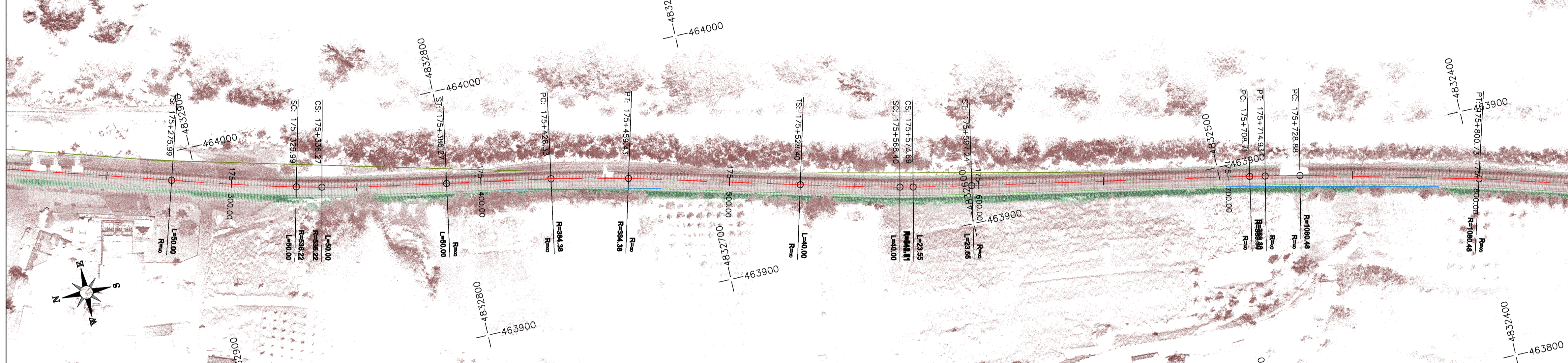
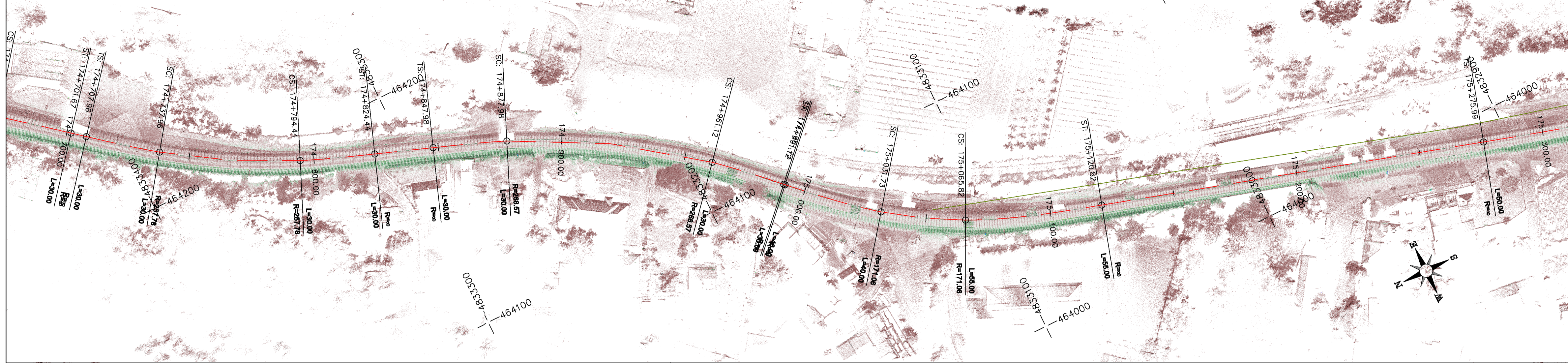
INVESTOR: PE "Roads of Serbia" Bulevar Jadrin Alkanaida 282, Belgrade		PROJECT: Elaborate of analysis of available sight distances with proposal of measures for removal of deficiencies on part of the State road III number 22, from mile 223 to mile 225, Krajevo/Ušće/3.5 km	
CUSTOMER: Vojvodina a.d. Jovana Djordjevića 2 Novi Sad		DESIGNER: "Panpro Team" d.o.o.	
TYPE OF TECHNICAL DOCUMENTATION: ELABORATE		Mark: Team leader: Miroslav Sabo, dipl.civil eng.	Team leader: Miroslav Sabo, dipl.civil eng.
VOLUME TITLE: Elaborate of analysis of available sight distance with proposal of measures of removal of deficiencies		Rank: Team member: Marina Komad, dipl.civil eng.	Rank: Team member: Duško Sokić, master of traffic eng.
DRAWING TITLE: Layout plan with envelopes of sight distances		Date No.: 2.7	Date: Jun 2023
Scale: 1:1000	Date: Jun 2023	No. of sheets: 97	Revision number: REV 0



LEGEND - SIGHT DISTANCE ENVELOPES

- required sight distance - direction Krajevo - Ušće
- required sight distance - direction Ušće - Krajevo
- overtaking sight distance - direction Krajevo - Ušće
- overtaking sight distance - direction Ušće - Krajevo

INVESTOR: PI "Roads of Serbia" Bulevar Jankov Aleksandra 282, Belgrade		PROJECT: Elaborate of analysis of available sight distances with proposal of measures for removal of deficiencies on part of the State road III number 22, from mile 223 to mile 225, Krajevo/Ušće/13.15.16	
CUSTOMER: Vojvodina a.d. Jovana Djordjevića 2 Novi Sad		DESIGNER: "Panpro Team" d.o.o.	
TYPE OF TECHNICAL DOCUMENTATION: ELABORATE		Mark: Team leader: Miel Sabo, dipl.civil eng.	Team leader: Miel Sabo, dipl.civil eng.
VOLUME TITLE: Elaborate of analysis of available sight distance with proposal of measures of removal of deficiencies		Book: E1	Team member: Marina Komad, dipl.civil eng.
		Team member: Durdica Sokic, master of traffic eng.	Team member: Durdica Sokic, master of traffic eng.
DRAWING TITLE: Layout plan with envelopes of sight distances		Date No.:	
		2.3	
Scale: 1:1000	Date: Jun 2023	No. of sheets: 97	Revision number: REV 0



LEGEND - SIGHT DISTANCE ENVELOPES

- required sight distance - direction Krajevo - Ušće
- required sight distance - direction Ušće - Krajevo
- overtaking sight distance - direction Krajevo - Ušće
- overtaking sight distance - direction Ušće - Krajevo

INVESTOR: PE "Roads of Serbia" Bulevar Jadrin Aleksandra 282, Beograd		PROJECT: Elaborate of analysis of available sight distances with proposal of measures for removal of deficiencies on part of the State road IB number 22, from node 223 to node 225, Krajevo/Beograd-Usće	
CUSTOMER: Vojvodina a.d. Jovana Djordjevića 2 Novi Sad		DESIGNER: "Panpro Team" d.o.o.	
TYPE OF TECHNICAL DOCUMENTATION: ELABORATE		Mark: Team leader: Miel Sabo, dipl.civil eng.	Team leader: Miel Sabo, dipl.civil eng.
VOLUME TITLE: Elaborate of analysis of available sight distance with proposal of measures of removal of deficiencies		Rank: E1 Team member: Duško Sokić, master of traffic eng.	Rank: E1 Team member: Duško Sokić, master of traffic eng.
DRAWING TITLE: Layout plan with envelopes of sight distances		Date No.: 2.9	Revision number: REV 0
Scale: 1:1000	Date: Jun 2023	No. of sheets: 97	Revision number: REV 0